



- This picture shows the complete system with 2 drive units mounted on consoles and the control panel above the feed front

Rope scraper for grid floors with Spinder PE-rope

To be able to work fast and efficient it is very important for the alleys and stalls to be clean and dry.

For this reason a proficient and quick removal of manure is essential. A wet and dirty floor leads to slipping and sliding which often results in injuries. Moreover a wet and dirty floor is an ideal breeding climate for bacteria causing serious hoof problems. Also manure on the legs of the cows causes dirty stalls and dirty stalls cause dirty udders.

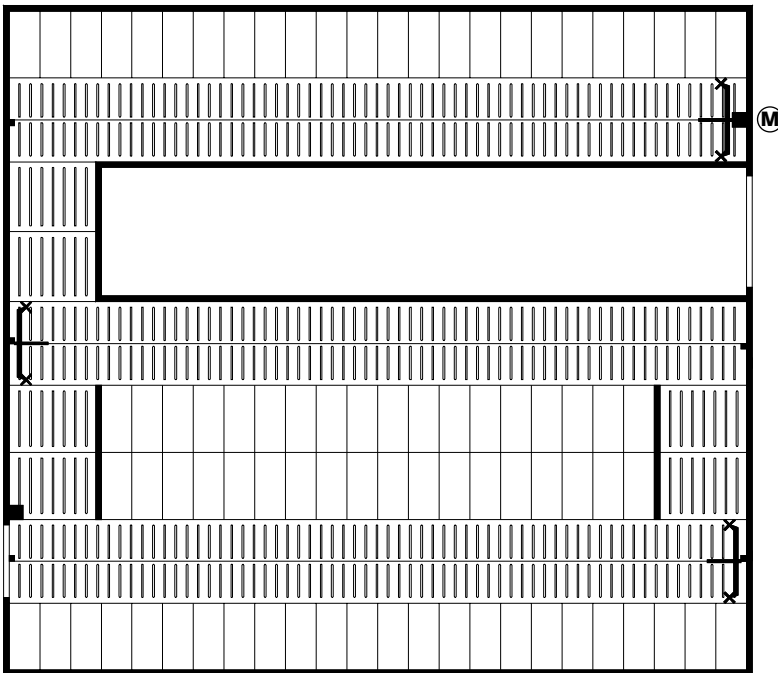
To prevent all these problems Spinder presents a scraper for grid floors consisting of 2 single-winch drive units, a number of high-quality synthetic corner wheels, and one or more scrapers. The scrapers are pulled by means of a 10 mm thick Spinder PE-rope. This is an animal friendly, low maintenance system, which keeps your barn floor clean and dry.

Major characteristics:

- This system has two drive units (0,75 kW) which can either be mounted on a console or on the floor;
- Robust and solid construction. Generally all parts are hot-dipped galvanized;
- Spinder PE-rope is a 10 mm thick synthetic rope which has a tensile force of 9000 kg and virtually does not stretch (approx. 3-4%); as a consequence the system runs smoothly and gently. The PE-rope is durable and extremely animal friendly;
- Standard included are a digital time clock and overload protection;
- This system can be installed in every barn, also when the alleys vary in length;
- Suitable in situations with an odd number of alleys;

Important advantages:

- Clean floors result in clean cows;
- Less foot problems, cleaner stalls;
- Less straw or sawdust required;
- Cleaner cows, therefore faster and hygienic milking;
- As a consequence high quality milk;



- Rope scraper for grid floors with Spinder PE-rope in a situation with 3 alleys



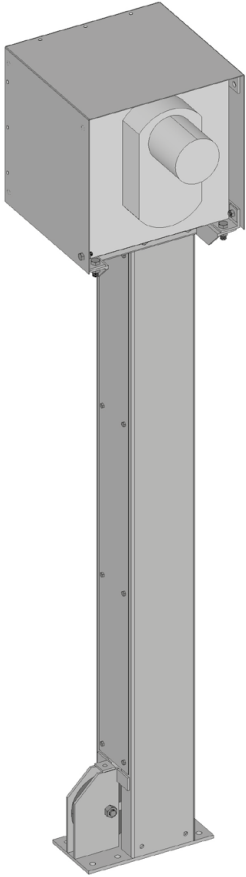
- Drive unit floor mounted



- Control panel and main switch

item-no.

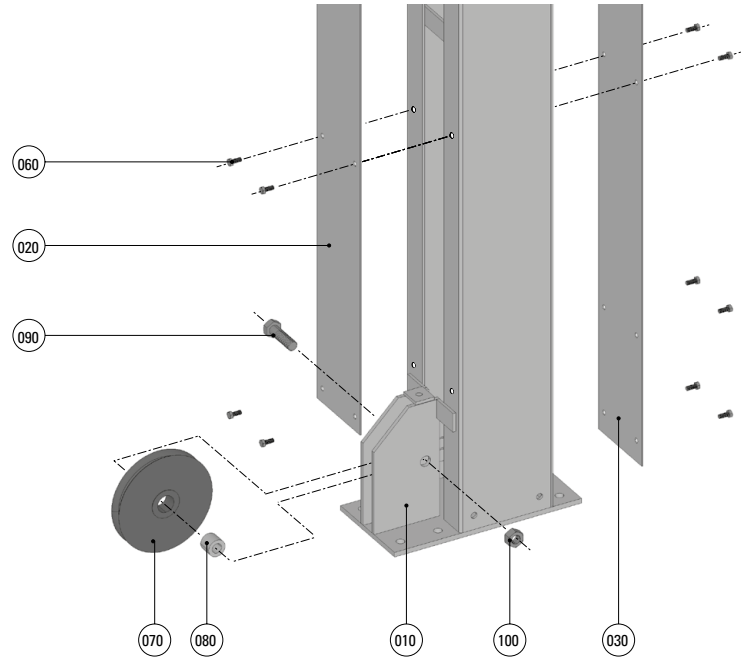
65.12.105	Drive unit PE-rope on console, 0,75 kW
65.12.155	Drive unit PE-rope for concrete floor, 0,75 kW
65.12.130	Mounting set drive unit for grid floor
65.12.140	Mounting set drive unit for concrete floor
65.12.165	Corner wheel/PE-rope/for grid floor
65.12.160	Corner wheel/PE-rope/for concrete floor
65.12.175	Scraper stop for grid floor
65.12.170	Scraper stop for concrete floor
61.06.042	Control panel, Basic
61.06.026	Main switch
65.84.125	Spinder PE-rope 10 mm, per meter
65.10.200	Scraper, - 200 cm
65.10.250	Scraper, 201 - 250 cm
65.10.300	Scraper, 251 - 300 cm
65.10.350	Scraper, 301 - 350 cm
65.10.400	Scraper, 351 - 400 cm



item-no.

spare parts PE-rope scraper systems

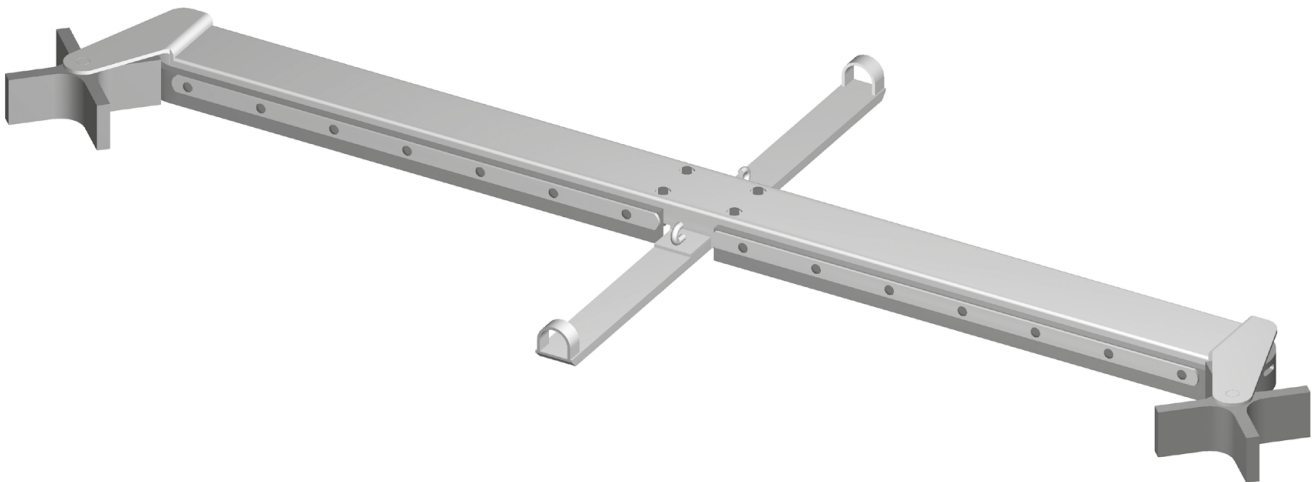
65.84.116	Spinder PE-rope 8mm, per meter
65.84.125	Spinder PE-rope 10mm, per meter
65.84.115	Wire rope socket
65.12.200	Pulley for rope 8 and 10 mm (070)
65.12.205	Bushing 35x20 L=30 (080)



item-no.

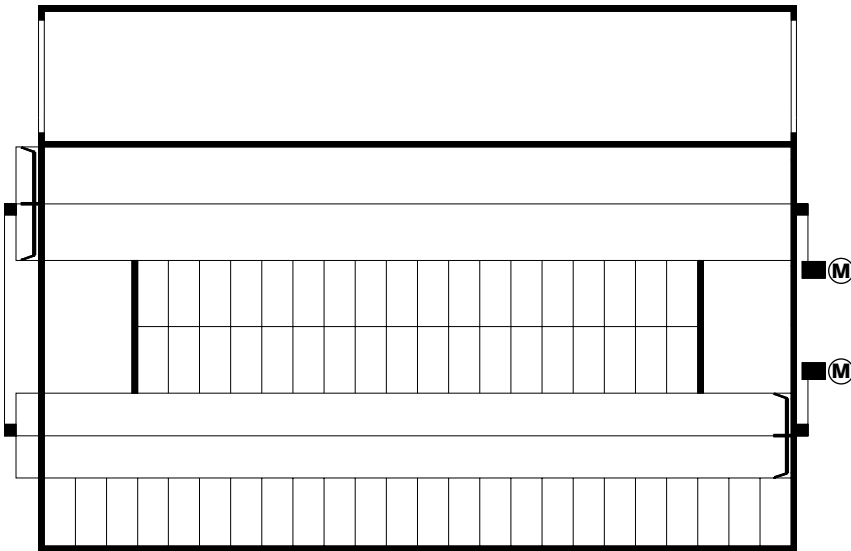
spare parts scrapers

65.10.025	Rubber strip for scraper per meter
73.08.045	Coach bolt M8x48 galv.
65.72.301	Rubber star-shaped wheel for alley scr.
65.72.300	PVC strip for alley scraper, per meter (available in lengths of 3 meters)





- Combi scraper in an alley, 350 cm wide



- Combi scraping system, dump and drive unit located outside the building



- 2 drive units, mounted on consoles, inside the building

Combi scraping system

In a building with solid concrete floors it is extremely important to keep the floors free of manure as much as possible. This can only be achieved by scraping a great number of times to keep the alleys clean to avoid slipping and sliding of the cows. In addition the fast removal of the manure prevents a large ammonia accumulation in the barn. The Spinder combi scraper is developed for solid concrete floors, with or without a rubber top layer. The scraper has a sturdy construction and is completely hot-dipped galvanized, it is built for intensive use. Each scraper is customized for type of floor and alley width.

Important advantages:

- The scraper has a sturdy construction and is completely hot-dipped galvanized;
- For each barn situation is a solution, even when the alleys are of a different length;
- Each scraper is customized for type of floor and alley width;
- The flaps under the scraper open automatically in the return action;
- The flaps take care of the cleaning alleys with an irregular width;
- Manure can be dumped in a pit or a grid channel;
- Drive unit can be located inside or outside a building;
- Trouble-free maintenance, grease nipples are easy accessible;

item-no.

65.12.105	Drive unit PE-rope on console, 0,75 kW
65.12.155	Drive unit PE-rope for concrete floor, 0,75 kW
65.12.140	Mounting set drive unit for concrete floor
65.12.160	Corner wheel/PE-rope/for concrete floor
65.12.170	Scraper stop for concrete floor
61.06.042	Control panel, Basic
61.06.026	Main switch
65.84.125	Spinder PE-rope 10 mm, per meter
65.45.250	Combi-scraper 200-250cm
65.45.300	Combi-scraper 251-300cm
65.45.350	Combi-scraper 301-350cm
65.45.400	Combi-scraper 351-400cm