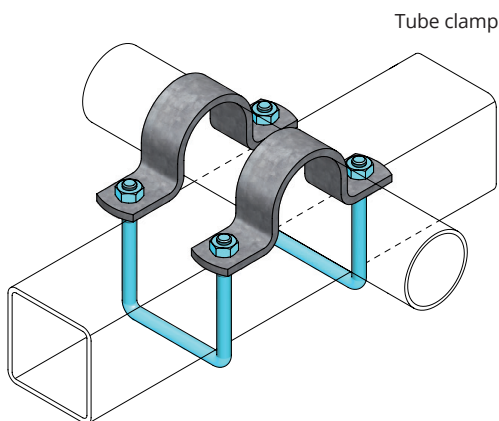
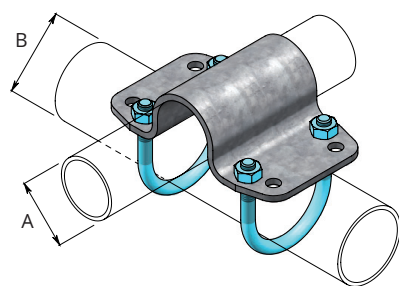


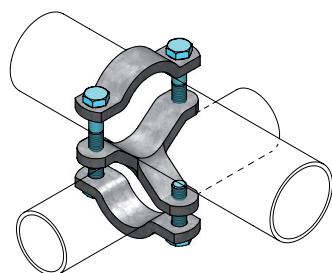
Wire clamp



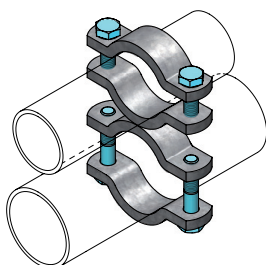
Tube clamp



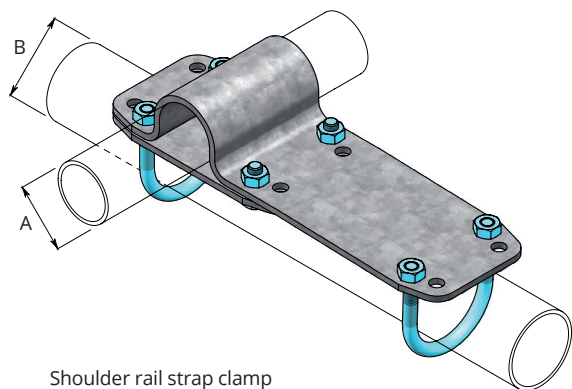
Strap clamp



Cross clamp

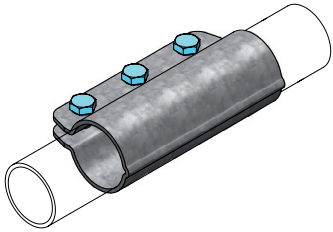


Three-part  
parallel clamp

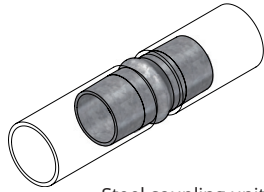


Shoulder rail strap clamp

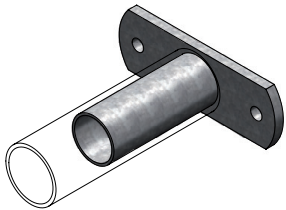
<b>04.04.005</b> <b>04.04.010</b> <b>04.04.015</b> <b>04.04.020</b>	<b>Wire clamp</b> Size A x B 34 x 34 mm (TG245) 48 x 48 mm 48 x 60 mm 76 x 48 mm
	<b>Tube clamp</b> For clamping square and round tubing. Size 70 ... 80 x 60 mm 60 x 102 mm 60 x 114 mm
	<b>Strap clamp</b> Recommended for mounting shoulder rails to freestalls. Size A x B 48 x 48 mm 48 x 60 mm 60 x 60 mm 76 x 48 mm 76 x 60 mm 89 x 48 mm 89 x 60 mm
	<b>Three-part parallel clamp</b> Size 48 x 48 mm 48 x 60 mm 60 x 60 mm
<b>04.16.010</b> <b>04.16.020</b> <b>04.16.030</b>	<b>Cross clamp</b> Size 48 x 48 mm 48 x 60 mm 60 x 60 mm
<b>04.07.049</b> <b>04.07.050</b>	<b>Shoulder rail strap clamp</b> Specifically made for mounting the shoulder rail to suspended freestalls: Size A x B 48 x 48 mm 48 x 60 mm



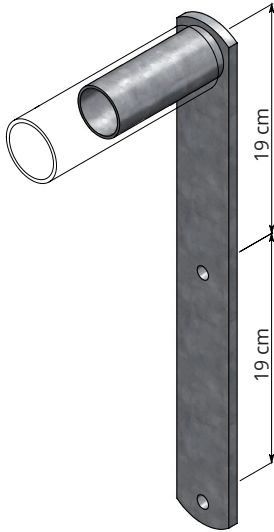
Tube clamp coupling



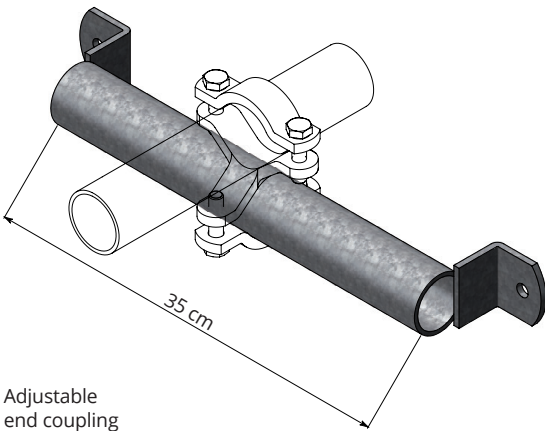
Steel coupling unit



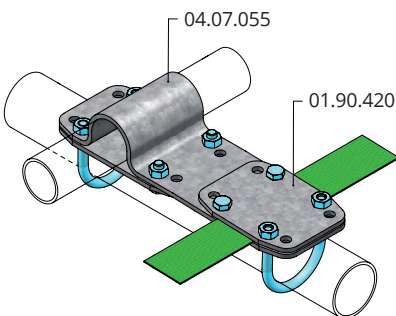
End coupling



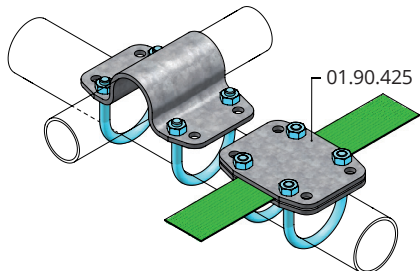
Extended end coupling



Adjustable end coupling

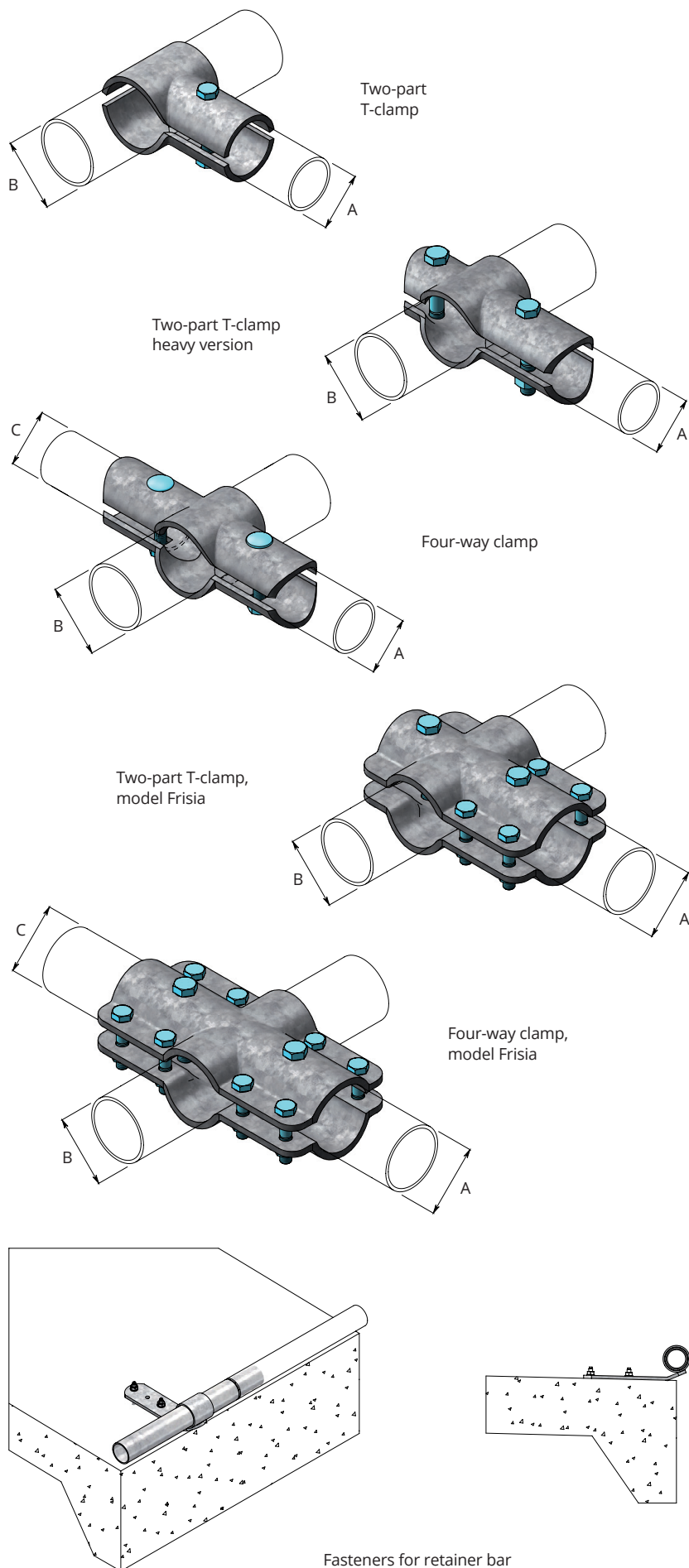


Retainer belt on shoulder rail strap clamp

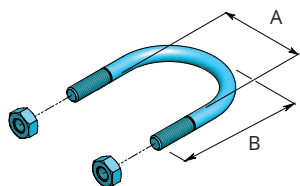


Retainer belt on 60 mm tubing

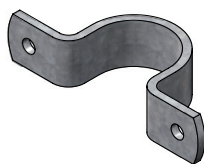
04.21.015 04.21.020	<b>Tube clamp coupling</b>
	<p>Specially designed tube clamp coupling for extra sturdiness, e.g. for mounting shoulder rails to suspended freestalls.</p> <p>Size For tube 48 mm For tube 60 mm</p>
04.20.015 04.20.020 04.20.025	<b>Steel coupling unit</b>
	<p>Steel coupling unit to connect tubing.</p> <p>Size For tube 48 mm For tube 60 mm For tube 76 mm</p>
04.24.015 04.24.020	<b>End coupling</b>
	<p>For mounting tubing to the wall or the floor, e.g. for mounting neck rail to a wall.</p> <p>Size For tube 48 mm For tube 60 mm</p>
04.24.115  04.08.010 04.04.010	<b>End coupling, adjustable</b>
	<p>For adjustable mounting of the shoulder rail to the wall by means of a wire clamp or cross clamp.</p> <p>Size 48 mm x 35 cm</p>
	<b>Fittings</b>
	<p>Cross clamp 48 x 48 mm Wire clamp 48 x 48 mm</p>
04.24.215	<b>Extended end coupling</b>
	<p>For mounting a shoulder rail to an end wall which is positioned lower.</p>
01.90.400 01.90.405 01.90.420  04.07.055  01.90.425	<b>Retainer belt for freestall dividers</b>
	<p>A nylon retainer belt instead of a shoulder rail to position the animal. It prevents the cow from rough contact with the shoulder rail. The retainer belt is mounted to each freestall divider with clamps special designed for this product.</p>
	<p>Retainer belt 50 mm, 100 m roll Retainer belt 50 mm, 50 m roll</p>
	<p>Belt clamp for mounting on plate clamp (bolts and nuts are included)</p>
	<p>Shoulder rail strap clamp with additional holes for mounting the retainer belt</p>
	<p>Belt clamp for 60 mm tubing (threated straps and nuts are included)</p>



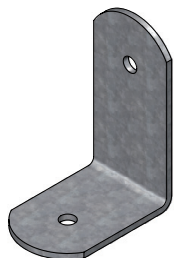
<b>04.12.010</b> <b>04.12.020</b> <b>04.12.130</b> <b>04.12.040</b> <b>04.12.160</b> <b>04.12.190</b>	<b>Two-part T-clamp</b>  Size A x B 34 x 48 mm 48 x 48 mm 48 x 60 mm 48 x 76 mm 60 x 60 mm (TJ210) 60 x 76 mm (TJ210)
	<b>Two-part T-clamp, heavy version</b>  Particular solid T-clamp with two bolts for an extra sturdy construction.  Size A x B 48 x 48 mm 48 x 60 mm 60 x 60 mm 60 x 76 mm
	<b>Four-way clamp</b>  Size A x B x C 48 x 48 x 48 mm 48 x 60 x 48 mm 48 x 76 x 48 mm 60 x 60 x 60 mm 60 x 76 x 60 mm
	<b>Two-part T-clamp, model Frisia</b>  Size A x B 60 x 60 mm 60 x 76 mm
	<b>Four-way clamp, model Frisia</b>  Size A x B x C 60 x 60 x 60 mm 60 x 76 x 60 mm
<b>01.90.150</b> <b>01.90.200</b> <b>01.90.250</b> <b>11.11.220</b>  <b>10.15.610</b> <b>10.20.610</b> <b>10.25.610</b>	<b>Fastener for retainer bar at the rear edge of the stall floor</b>  Fastener for retainer bar 48 mm Fastener for retainer bar 60 mm Fastener for retainer bar 76 mm Floor anchor bolt M10 x 86 (2 per fastener)  Retainer bar (tube with reduced end part), working length 5.90 m Diameter 48 mm Diameter 60 mm Diameter 76 mm



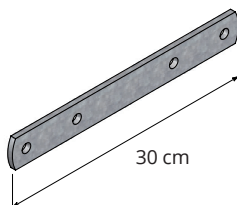
Threaded strap



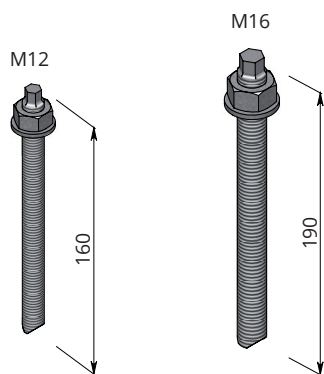
Mounting clip



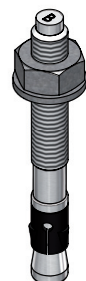
Angel support



Connecting piece for wooden parts



Anchor rod, standard



Floor anchor

item-no.	type	L (mm)	bore Ø	L (mm)	Nm
11.12.012	M 12	95	14	110	30
11.12.016	M 16	95	18	125	60

04.53.065 04.53.085 04.55.075 04.56.090 04.57.250 04.66.090 04.80.110	<b>Threaded strap</b> Threaded strap M10, galvanized, nuts included.  Size A x B 34 x 65 mm 34 x 85 mm 48 x 75 mm 60 x 90 mm 76 x 105 mm 60 x 90 mm 80 x 110 mm
	<b>Threaded strap M12</b> Threaded strap M12, galvanized, nuts included.  Maat A x B 60 x 90 mm
04.18.010 04.18.015 04.18.020 04.18.025 04.18.030 04.18.050 04.18.055 04.18.040 04.18.060 04.18.080 04.18.110	<b>Mounting clip</b>  34 mm 48 mm 60 mm 76 mm 89 mm 102 mm 108 mm 114 mm 60 x 60 mm 80 x 80 mm 80 x 120 mm
04.28.100	<b>Angle support</b> For fastening wooden front to the floor, etc.  Size 10 x 14 cm
02.96.030	<b>Connecting piece for wooden parts</b> For connecting wooden parts underneath the feed front.
11.11.210 11.11.220 11.11.225 11.11.230 11.11.240 11.11.250	<b>Floor anchor</b> Steel anchor bolt. Characteristics: • Hot dip galvanized; • Bolt diameter = drill diameter; • Self-locking;  Diam. x length M10 x 71 mm M10 x 86 mm M10 x 126 mm M12 x 86 mm M12 x 106 mm M16 x 120 mm
11.12.012 11.12.016	<b>Chemical anchors</b> Concrete anchor, consisting of mortar capsule and hot dip galvanized rod. Characteristics: • No pre-stress in concrete; • Very suitable for our floor mounted support posts;  Standard model M12, incl. capsule (10 anchors) M16, incl. capsule (10 anchors)