

Meadow Next mattress

The Meadow Next mattress is soft and extremely resilient. For this reason the cows will lie down comfortably for a long period of time, and the surface of the mattress will keep its even shape. The main part of the day cows are lying down to ruminate. While in the barn, dairy cows prefer a stall with a soft bedding. This results in longer hours of resting and therefore the cows will be in a good condition to produce more milk.

Soft and resilient

The Meadow mattress is composed out of a high quality latex foam, surrounded with PVC wrap and a rubber top mat. The total thickness of the mattress is 4 cm (for heifers 2.5 cm).

Durable top mat on a roll

The 4 mm thick top mat is made of rubber with a carcass of a strong ply of polyester-nylon. The mat is attached to the floor on all sides. This to prevent moisture and manure from creeping underneath the top mat, which is essential for the hygiene and durability of the latex foam layer. Moreover the top mat is exceedingly durable.

Secure grip for lying down and getting up

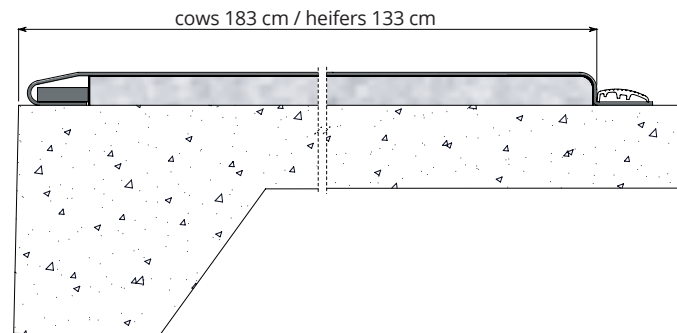
The non-skid top surface of the Meadow Next mattress provides the cows with sufficient grip for laying down and getting up.

Protection at the rear

The rear of the stall endures the most wear by way of cow traffic. The top mat is fastened at the rear with a solid rubber strip of 20 mm thick and 60 mm wide. This also gives the advantage that the mattress slopes down, so moisture will drain and the mattress is easy to clean.

Easy to mount

Mounting is simple. At the rear the mattress is attached to the floor with a flexible rubber strip and at the front and sides with aluminium or PVC mounting profiles. Special nails are used for secure mounting. After drilling a hole the nails can be hammered in the concrete without using a plug.



Longevity

The Meadow Next mattress is very durable, whilst retaining its comfort. With a warranty of 10 years on the top mat it is a solid investment (ask for warranty details).

Available for cows and heifers

The Meadow Next mattress is available in sizes for cows and heifers.

Cows

- Thickness: 4 cm
- Width: 185 cm
- Top mat: rubber with nylon carcass 4 mm, width 200 cm
- Mounting: Rubber strip 20 x 60 mm and aluminum profiles

Heifers

- Thickness: 2.5 cm
- Width: 130 cm
- Top mat: rubber with nylon carcass 3 mm, width 150 cm
- Mounting: Rubber strip 20 x 60 mm and PVC profiles



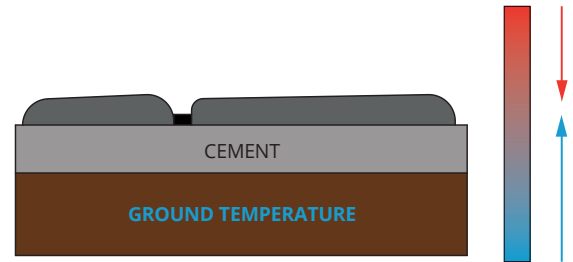
Meadow Next mattress for cows	
05.06.100	Meadow mattress 185 cm, per meter Mounting materials included
05.10.830	Aluminum mounting profile 180 cm - nails included
05.07.500	Additional charge ordering less than 10 m
Meadow Next mattress for heifers	
05.06.300	Meadow mattress 130 cm, per meter Mounting materials included
05.10.840	PVC mounting profile 130 cm - nails included
05.07.500	Additional charge ordering less than 10 m



Waterbeds

Waterbeds provide optimal lying comfort. When the animals lie down, they are floating on a layer of water to avoid any pressure points; this will result in fewer joint problems and better animal welfare. With the cows standing on the waterbed, their legs will push the water directly underneath aside for a stable position.

A waterbed also has an insulating effect; the water is cooler than the environment in summer, and warmer than the environment in winter. Very pleasant for the animals. On top of that there is a strong relationship between the temperature of the lying area and milk leakage. Cooler means less milk leakage.



Waterbeds will regain their original shape after the animal has moved away; a convex shape. This helps to discharge any moisture from the waterbed and allows for faster drying. Dry and hygienic. A waterbed will therefore require a small amount of litter and, perhaps more importantly, is saving labour for the dairy farmer.

A waterbed consists of two thick layers of rubber that are vulcanised to one another at the edges. Plastic reinforcement is inside the rubber. As a result, the rubber layers are very strong and last a long time. And water? That remains water. In short, a waterbed lasts for many years without compromising the comfort.

Cost-wise, it can be said that waterbeds constitute a substantial capital expenditure, even more so if compared to deep litter, but in terms of annual expenditure the waterbeds are among the most economical solutions (depreciation over more than 10 years, less labour, less litter, good hygiene).

In short: a waterbed for optimum cow comfort and better returns.

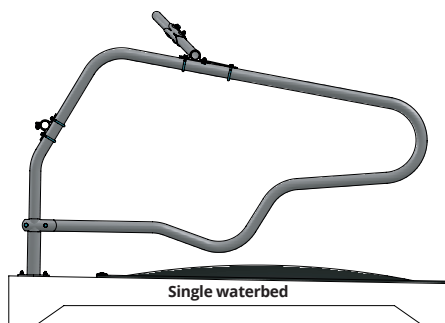
Waterbeds come in a number of widths to suit the various stall widths. The water compartments are sealed with a special shut-off valve.

There are two kinds of waterbeds:

- **Single waterbeds**, in which the water compartment is one unit;
- **Dual waterbeds**, separating the front (knee) from the rear (belly/hock) water compartment. This gives the Dual waterbeds extra knee comfort.

Both waterbed models have been DLG tested and certified.





Single Waterbed

The single waterbed consists of one water compartment; so it makes up one large cubicle bed.

Single waterbed, important features:

- Available for various stall widths;
- The standard length is 190 cm;
- 1 filling point, at the front;
- The PE knee bar allows you to set the stall length to suit the herd;
- 10-year reducing guarantee.



Single Waterbed (FriesKo)

Delivered on customer defined length per cubicle row, including:

- 2 stainless steel side profiles for waterbed 190 per defined length
- total amount of aluminum top-strips
- total amount of stainless steel nails
- total amount of stainless steel closures.

Freestall width:

- 05.04.110 110 cm
- 05.04.112 112,5 cm
- 05.04.115 115 cm*
- 05.04.120 120 cm*
- 05.04.122 122 cm*

Needed per project:

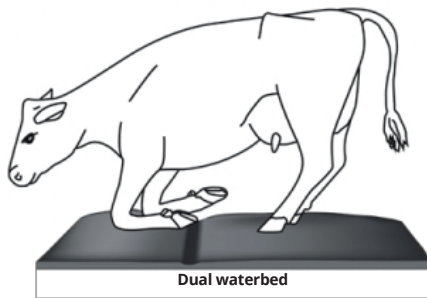
- 05.10.880 Socket punch (1 per delivery)
- 05.10.855 Filling kit, with nozzle, water meter and ball valve

Optional (when needed additionally)

- 05.10.920 Stainless steel side profile for waterbed 190 cm

PE125 knee rail - material thickness 7.4 mm

- 01.90.350 PE125 knee rail, length 6 m
- 01.90.352 Coupling for PE125 knee rail
- 01.90.375 Cover for PE 125
- 01.90.360 Mounting clip for knee rail PE125 (1 mounting clip per 1.10 - 1.25 m)
- 11.11.210 Floor anchor M10 x 71 (2 per mounting clip)



Dual waterbed

In Dual waterbeds is a separation between the front (knee) and the rear (belly/hock) water compartment. The knee compartment is filled with water in such a way that a cushion of water is always present under the cow's knees when she is lying down. The details of comfort!

Dual waterbed, important features:

- Available for various stall widths;
- The standard length is 183 cm;
- 2 filling points, 1 on the front and 1 on the back;
- The PE knee bar allows you to set the stall length to suit the herd;
- 10-year reducing guarantee.



Dual waterbed

Delivered on customer defined length per cubicle row, including:

- 2 stainless steel side profiles for waterbed 183 per defined length
- total amount of aluminum top-strips
- total amount of stainless steel nails
- total amount of stainless steel closures.

Freestall width:

- 05.03.110 110 cm
- 05.03.112 112,5 cm
- 05.03.115 115 cm*
- 05.03.120 120 cm*
- 05.03.125 125 cm*

Needed per project:

- 05.10.880 Socket punch (1 per delivery)
- 05.10.855 Filling kit, with nozzle, water meter and ball valve

Optioneel (indien extra benodigd)

- 05.10.910 Stainless steel side profile for waterbed 183 cm



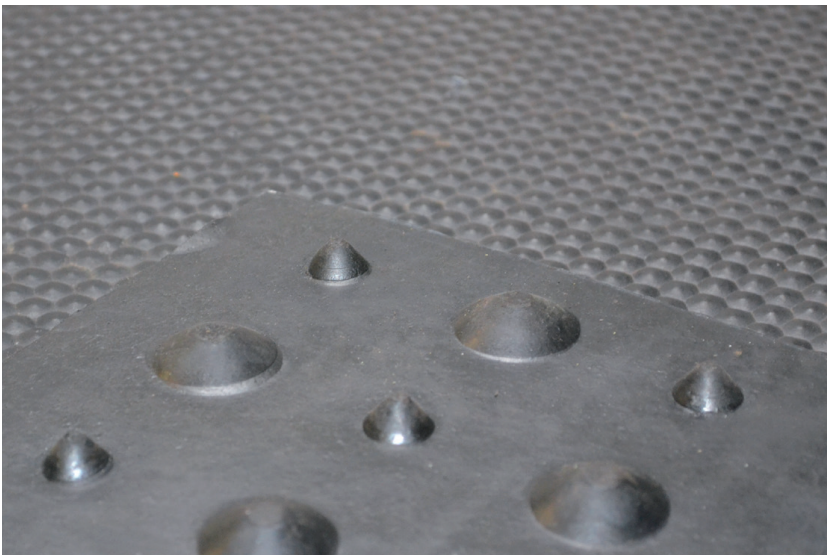
*

PE125 knee rail - material thickness 7.4 mm

- 01.90.350 PE125 knee rail, length 6 m
- 01.90.352 Coupling for PE125 knee rail
- 01.90.375 Cover for PE 125
- 01.90.360 Mounting clip for knee rail PE125 (1 mounting clip per 1.10 - 1.25 m)
- 11.11.210 Floor anchor M10 x 71 (2 per mounting clip)



• Studded rubber mat



• Studded rubber mat



• Galvanized fastening profiles are installed with concrete screws

Studded rubber mat

The studded mats are made of flexible rubber with a closed structure; this structure makes it hard for dirt to cake to the mat and makes cleaning easy. The fabric reinforcement provides a stable and solid mat. The studs underneath the mat have a spring-type effect for better lying comfort. The mats are available by the roll or cut to size. Easy to assemble and suitable for almost any freestall dividers.

Important features

- Durable;
- Permanently flexible;
- Non-slip;
- Thickness 20 mm;
- Width: 180 and 160 cm;
- Available by the roll (60 m) or cut to size.

05.20.181	Studded rubber mat: width 180 cm: Full coil, length 60 m
05.20.280	Cut to desired length (max. 60 m), per meter
	Fittings
05.10.705	Fastening profile for top side 200 cm, screws included
05.10.710	Fastening profile for the sides, length 175 cm, for studded rubber mat 180 cm, screws included
	Studded rubber mat: width 160 cm
05.20.161	Full coil, length 60 m
05.20.260	Cut to desired length (max. 60 m), per meter
	Fittings
05.10.705	Fastening profile for top side 200 cm, screws included
05.10.720	Fastening profile for the sides, length 150 cm, for studded rubber mat 160 cm, screws included